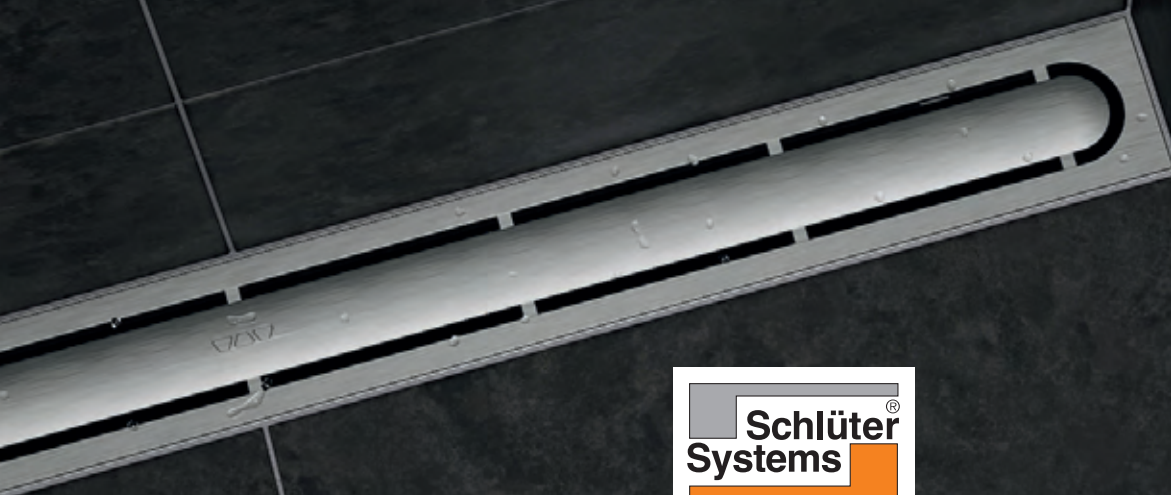




DESIGNER STORAGE

Schlüter®-SHELF



Attractive, stable and quick to install: Schlüter®-SHELF

Schlüter®-SHELF is a stylish addition to showers, bathrooms and much more. The shelf in elegant design offers a practical storage solution whatever tiles are to be installed or already exist.

- Brushed stainless steel or aluminium with TRENDLINE coating
- Designs: PURE, SQUARE, WAVE, FLORAL and CURVE
- Five different formats

TRENDLINE coating for PURE, SQUARE and WAVE available from April 2021.

Schlüter®-SHELF-E

Schlüter®-SHELF-E are shelves in three different shapes for installation in corners. The shelves can be integrated into the tile assembly during installation or retrofitted into the joints of tiled walls, using the 2 mm attachment wings. Schlüter®-SHELF-E are suitable as shelves in shower areas, but can also be integrated into other tiled areas, e.g. into tiled kitchen walls.

Schlüter®-SHELF-W

Schlüter®-SHELF-W are rectangular shelves for wall surfaces. Their trapezoid perforated anchoring legs are integrated into the tile assembly during tile installation. They are suitable as shelves in shower areas, but can also be integrated into other tiled areas, e.g. into tiled kitchen walls.

Schlüter®-SHELF-N

Schlüter®-SHELF-N are rectangular shelves for use in prefabricated Schlüter®-KERDI-BOARD-N niches. They are precisely fitted as a shelf in Schlüter®-KERDI-BOARD-N niches during tile installation.

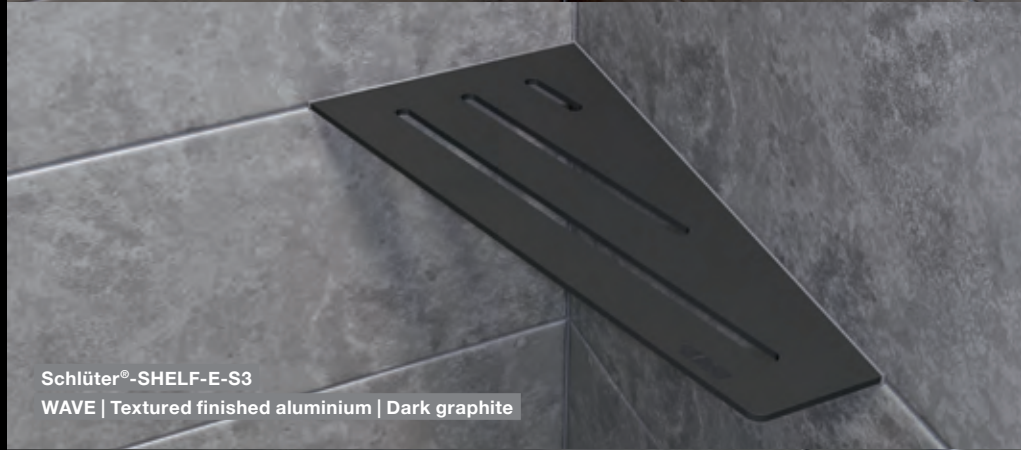
The print cannot accurately reproduce the original colours.



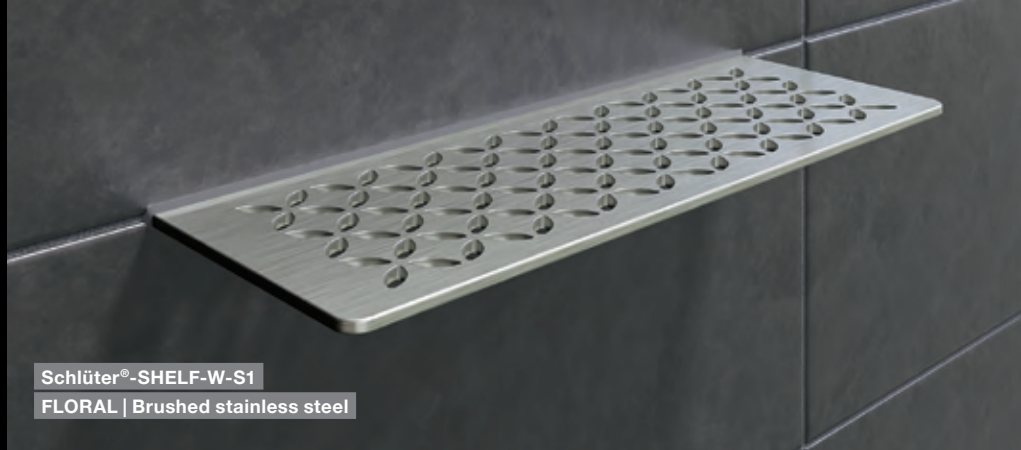
Schlüter®-SHELF-E-S1
PURE | Textured finished aluminium | Stone grey



Schlüter®-SHELF-E-S2
SQUARE | Textured finished aluminium | Ivory



Schlüter®-SHELF-E-S3
WAVE | Textured finished aluminium | Dark graphite



Schlüter®-SHELF-W-S1
FLORAL | Brushed stainless steel



Schlüter®-SHELF-N-S1
CURVE | Textured finished aluminium | Beige grey

Schlüter®-SHELF-E-S1

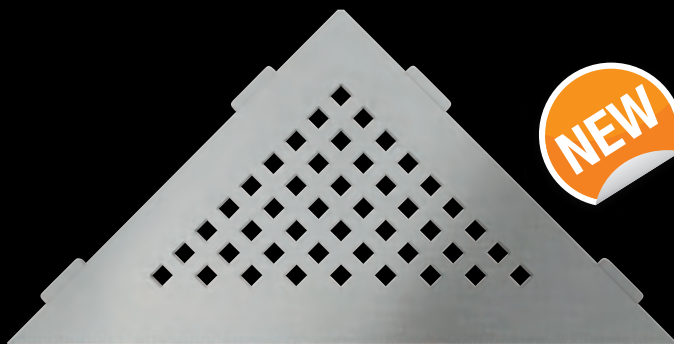
DESIGNS

210 x 210 mm



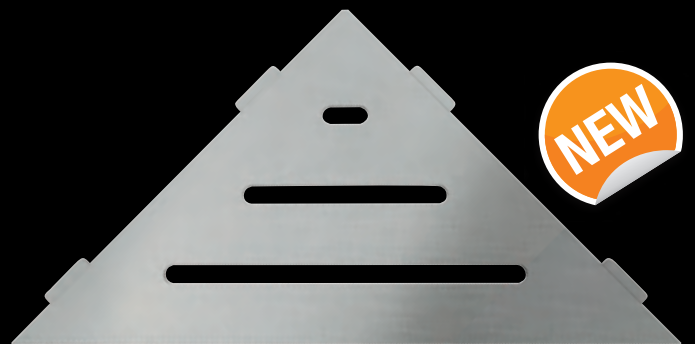
PURE

Brushed stainless steel
SE S1 D7 EB



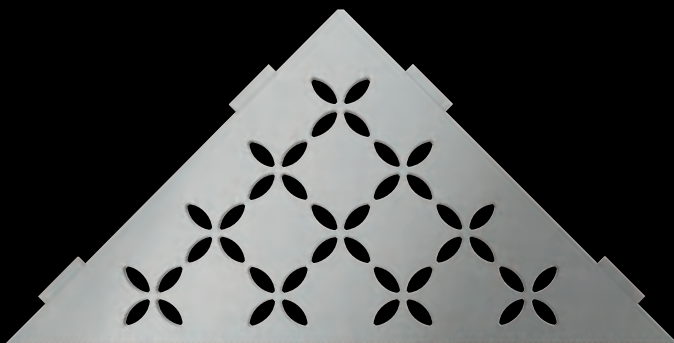
SQUARE

Brushed stainless steel
SE S1 D3 EB



WAVE

Brushed stainless steel
SE S1 D10 EB



FLORAL

Brushed stainless steel
SE S1 D5 EB



CURVE

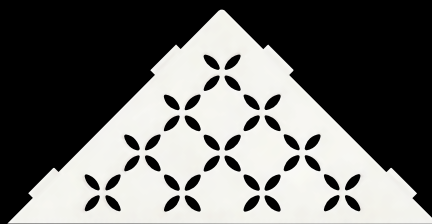
Brushed stainless steel
SE S1 D6 EB

Schlüter®-SHELF-E-S1

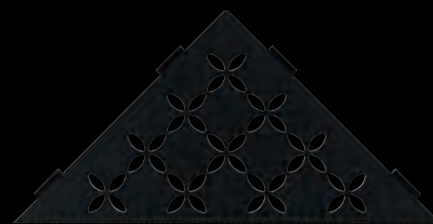
COLOURS

210 x 210 mm

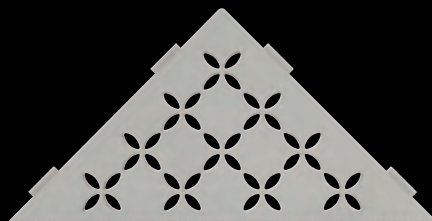
All designs are available in all colour variations.
Shown here using the example of the FLORAL design:



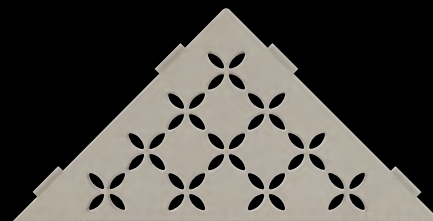
Textured finished aluminium
Matt brilliant white SE S1 D5 MBW



Textured finished aluminium
Matt graphite black SE S1 D5 MGS



Textured finished aluminium
Beige grey SE S1 D5 TSBG



Textured finished aluminium
Cream SE S1 D5 TSC



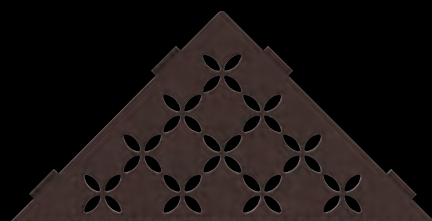
Textured finished aluminium
Dark anthracite SE S1 D5 TSDA



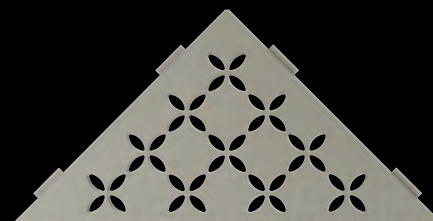
Textured finished aluminium
Ivory SE S1 D5 TSI



TRENDLINE coating for PURE,
SQUARE and WAVE
available from April 2021.



Textured finished aluminium
Bronze SE S1 D5 TSOB



Textured finished aluminium
Stone grey SE S1 D5 TSSG

Schlüter®-SHELF-E-S2

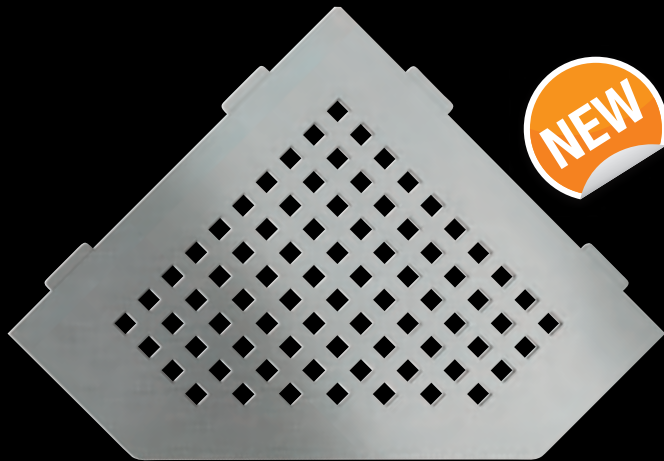
DESIGNS

75 x 195 x 195 x 75 mm



PURE

Brushed stainless steel
SE S2 D7 EB



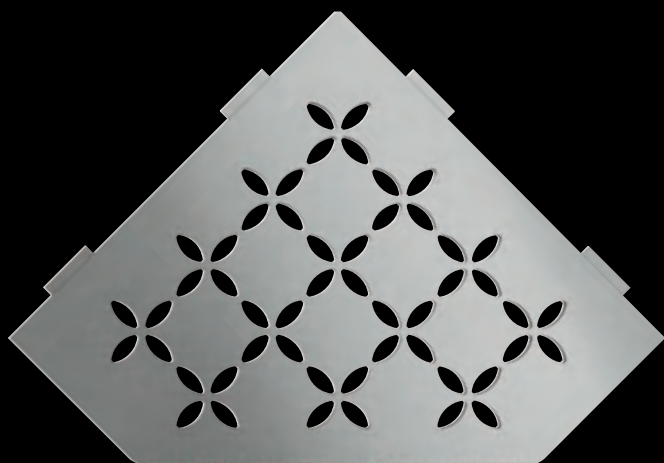
SQUARE

Brushed stainless steel
SE S2 D3 EB



WAVE

Brushed stainless steel
SE S2 D10 EB



FLORAL

Brushed stainless steel
SE S2 D5 EB



CURVE

Brushed stainless steel
SE S2 D6 EB

Schlüter®-SHELF-E-S2

COLOURS

75 x 195 x 195 x 75 mm

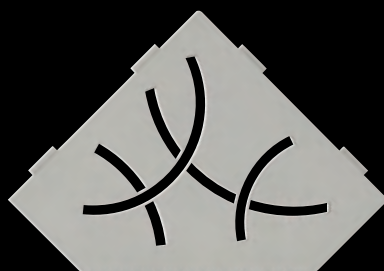
All designs are available in all colour variations.
Shown here using the example of the CURVE design:



Textured finished aluminium
Matt brilliant white SE S2 D6 MBW



Textured finished aluminium
Matt graphite black SE S2 D6 MGS



Textured finished aluminium
Beige grey SE S2 D6 TSBG



Textured finished aluminium
Cream SE S2 D6 TSC



Textured finished aluminium
Dark anthracite SE S2 D6 TSDA



Textured finished aluminium
Ivory SE S2 D6 TSI



Textured finished aluminium
Bronze SE S2 D6 TSOB



Textured finished aluminium
Stone grey SE S2 D6 TSSG



TRENDLINE coating for PURE,
SQUARE and WAVE
available from April 2021.

Schlüter®-SHELF-E-S3

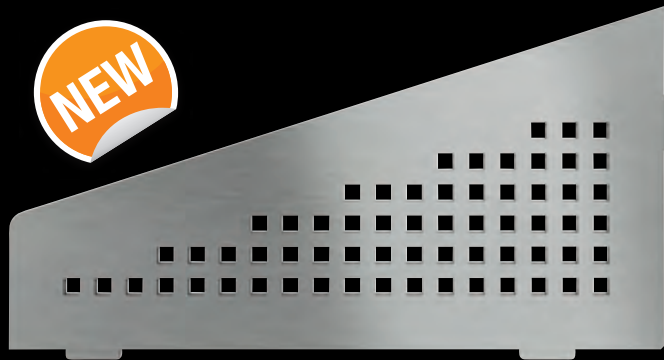
DESIGNS

62 x 295 x 154 mm



PURE

Brushed stainless steel
SE S3 D7 EB



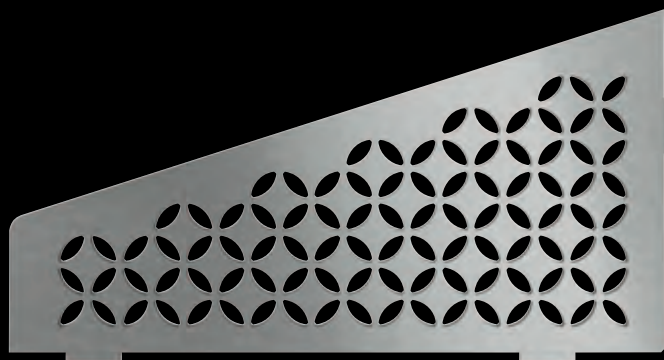
SQUARE

Brushed stainless steel
SE S3 D3 EB



WAVE

Brushed stainless steel
SE S3 D10 EB



FLORAL

Brushed stainless steel
SE S3 D5 EB



CURVE

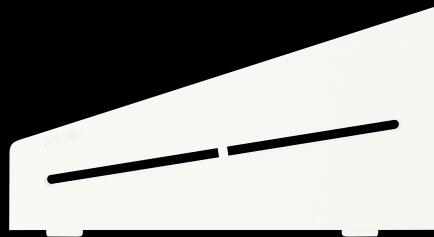
Brushed stainless steel
SE S3 D6 EB

Schlüter®-SHELF-E-S3

COLOURS

62 x 295 x 154 mm

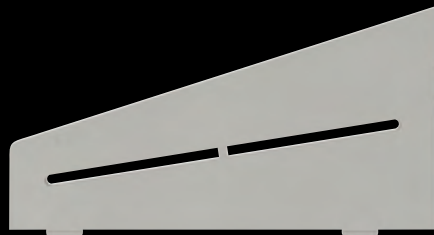
All designs are available in all colour variations.
Shown here using the example of the PURE design:



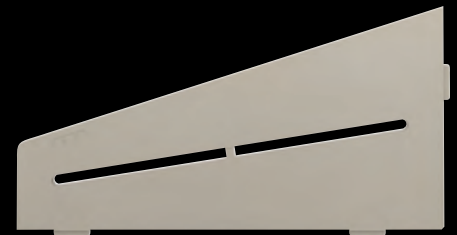
Textured finished aluminium
Matt brilliant white SE S3 D7 MBW



Textured finished aluminium
Matt graphite black SE S3 D7 MGS



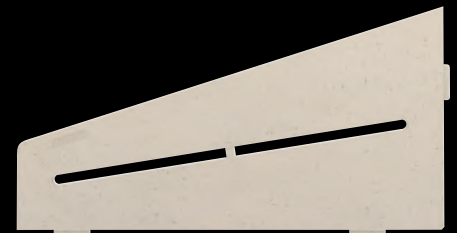
Textured finished aluminium
Beige grey SE S3 D7 TSBG



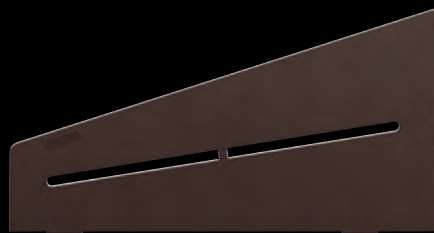
Textured finished aluminium
Cream SE S3 D7 TSC



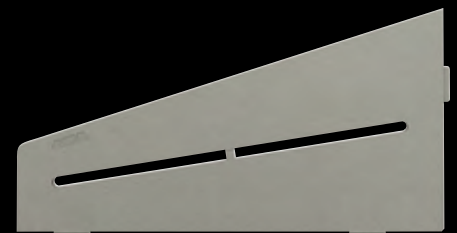
Textured finished aluminium
Dark anthracite SE S3 D7 TSDA



Textured finished aluminium
Ivory SE S3 D7 TSI



Textured finished aluminium
Bronze SE S3 D7 TSOB



Textured finished aluminium
Stone grey SE S2 D7 TSSG

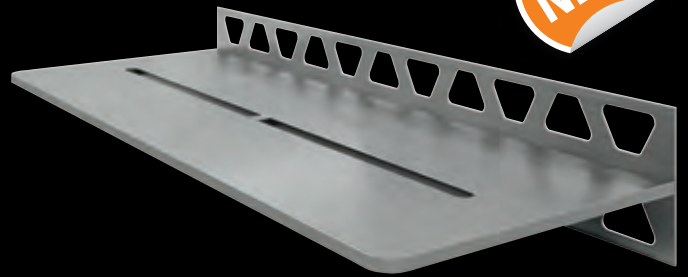


TRENDLINE coating for PURE,
SQUARE and WAVE
available from April 2021.

Schlüter®-SHELF-W-S1

DESIGNS

115 x 300 mm



PURE

Brushed stainless steel
SW S1 D7 EB



SQUARE

Brushed stainless steel
SW S1 D3 EB



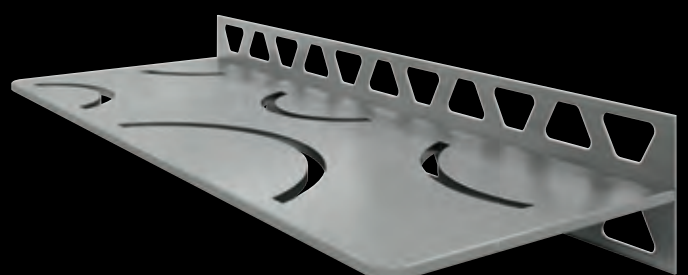
WAVE

Brushed stainless steel
SW S1 D10 EB



FLORAL

Brushed stainless steel
SW S1 D5 EB



CURVE

Brushed stainless steel
SW S1 D6 EB

Schlüter®-SHELF-W-S1

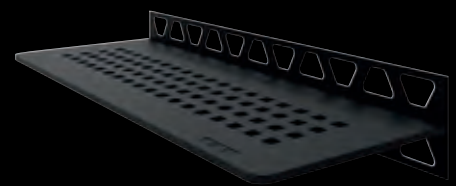
COLOURS

115 x 300 mm

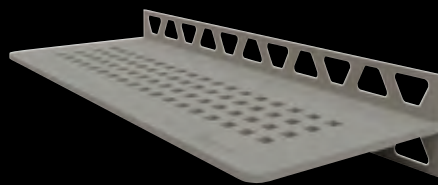
All designs are available in all colour variations.
Shown here using the example of the SQUARE design:



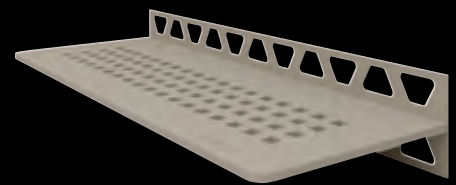
Textured finished aluminium
Matt brilliant white SW S1 D3 MBW



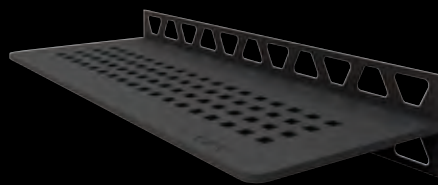
Textured finished aluminium
Matt graphite black SW S1 D3 MGS



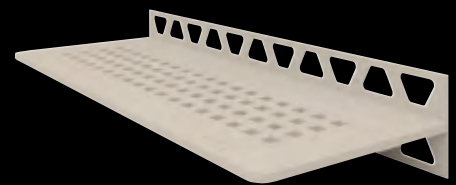
Textured finished aluminium
Beige grey SW S1 D3 TSBG



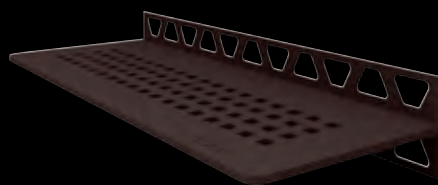
Textured finished aluminium
Cream SW S1 D3 TSC



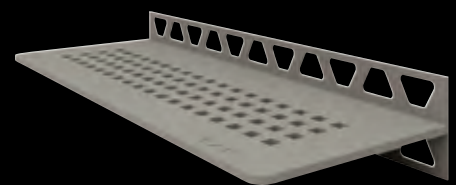
Textured finished aluminium
Dark anthracite SW S1 D3 TSDA



Textured finished aluminium
Ivory SW S1 D3 TSI



Textured finished aluminium
Bronze SW S1 D3 TSOB



Textured finished aluminium
Stone grey SW S1 D3 TSSG



TRENDLINE coating for PURE,
SQUARE and WAVE
available from April 2021.

Schlüter®-SHELF-N-S1

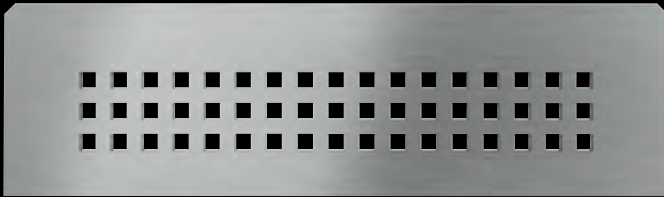
DESIGNS

87 x 300 mm



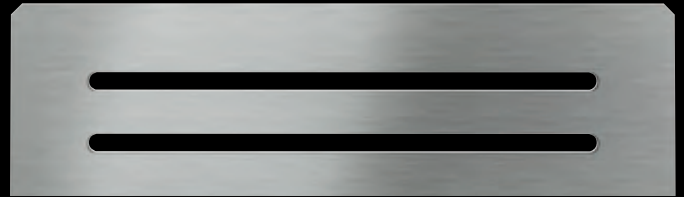
PURE

Brushed stainless steel
SN S1 D7 EB



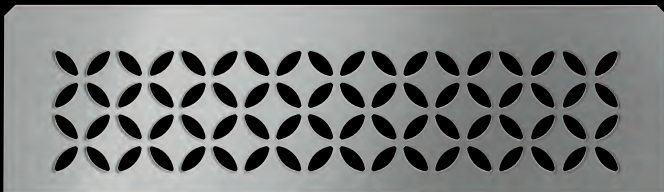
SQUARE

Brushed stainless steel
SN S1 D3 EB



WAVE

Brushed stainless steel
SN S1 D10 EB



FLORAL

Brushed stainless steel
SN S1 D5 EB



CURVE

Brushed stainless steel
SN S1 D6 EB

Schlüter®-SHELF-N-S1

COLOURS

87 x 300 mm

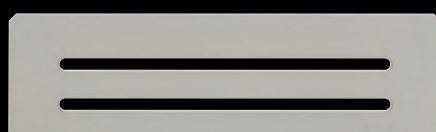
All designs are available in all colour variations.
Shown here using the example of the WAVE design:



Textured finished aluminium
Matt brilliant white SN S1 D10 MBW



Textured finished aluminium
Matt graphite black SN S1 D10 MGS



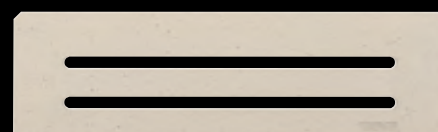
Textured finished aluminium
Beige grey SN S1 D10 TSBG



Textured finished aluminium
Cream SN S1 D10 TSC



Textured finished aluminium
Dark anthracite SN S1 D10 TSDA



Textured finished aluminium
Ivory SN S1 D10 TSI



Textured finished aluminium
Bronze SN S1 D10 TSOB



Textured finished aluminium
Stone grey SE S1 D10 TSSG



TRENDLINE coating for PURE,
SQUARE and WAVE
available from April 2021.



Schlüter-Systems Ltd · Units 3-5 Bardon 22 Industrial Estate · Beveridge Lane · Coalville · Leicestershire · LE67 1TE
Tel.: +44 1530 813396 · Fax: +44 1530 813376 · sales@schluter.co.uk · www.schluter.co.uk